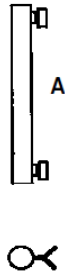


6.8 MONTAGEBEISPIELE UND DIMENSIONEN VON STAHLROHREN FÜR SPEZIALBEFESTIGUNGEN

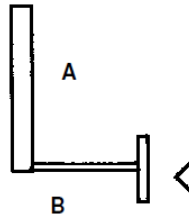
→ Handbuch «Signalisation Wanderwege», S. 43

Spezialrohr Nr. 01



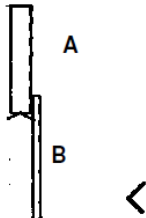
Typ	A	B		D
1	500 mm			2"
2	800 mm			2"

Spezialrohr Nr. 02



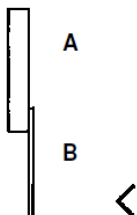
Typ	A	B		D
1	500 mm	300 mm		2"
2	800 mm	400 mm		2"
3	1000 mm	300 mm		2"

Spezialrohr Nr. 03



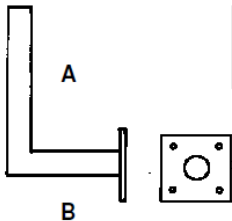
Typ	A	B		D
1	500 mm	900 mm		2"
2	800 mm	900 mm		2"
3	800 mm	900 mm		1½"
4	1500 mm	900 mm		2"

Spezialrohr Nr. 04



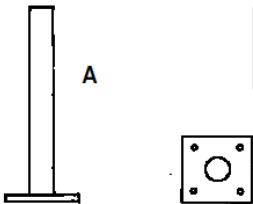
Typ	A	B		D
1	500 mm	600 mm		1½"
2	500 mm	600 mm		2"
3	1000 mm	1000 mm		1½"
4	1000 mm	1000 mm		2"
5	1500 mm	1000 mm		1½"
6	1500 mm	1000 mm		2"

Spezialrohr Nr. 05



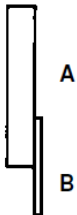
Typ	A	B		D
1	500 mm	160 mm		2"
2	800 mm	160 mm		2"

Spezialrohr Nr. 06



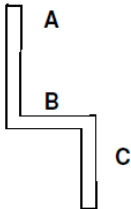
Typ	A	B		D
1	500 mm			2"
2	800 mm			2"

Spezialrohr Nr. 07



Typ	A	B		D
1	500 mm	120 mm		2"
2	800 mm	120 mm		2"
3	1000 mm	120 mm		

Spezialrohr Nr. 08



Typ	A	B	C	D
1	1700 mm	400 mm	800 mm	2"